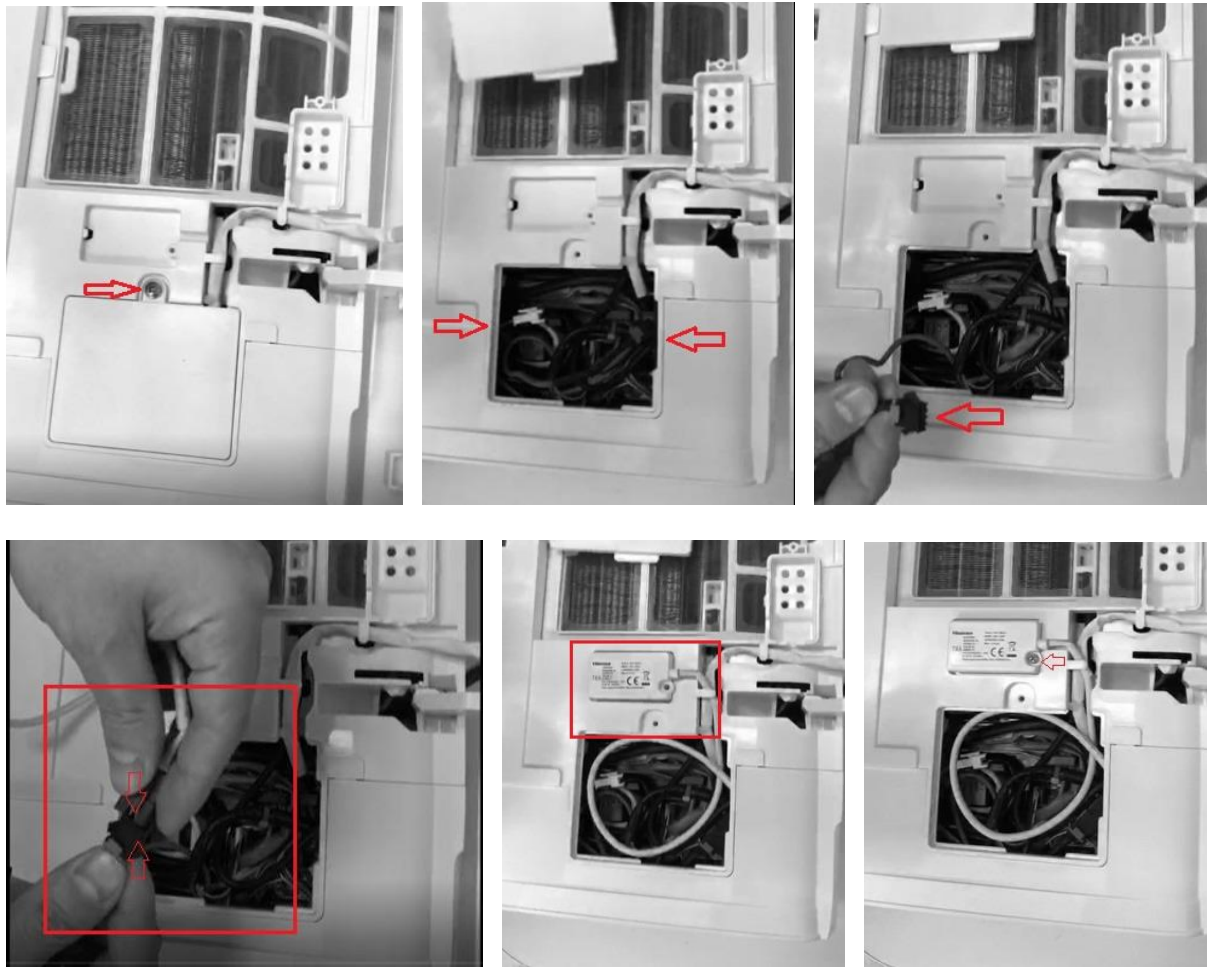


Installation guide – WiFi module - ACC_HWIFI
Heinner AC compatible models:
HAC-HS09WH++ / HAC-HS09KIT++ / HAC-HS12WH++
HAC-HS12KIT++ / HAC-HS18WH++ / HAC-HS18KIT++
HAC-HS24WH++ / HAC-HS24KIT++

Thank you for your purchase!

How to install the WiFi module

1. Open air conditioner panel and use tools to dismantle the terminal cover (picture 1).
 2. Connect the wire terminals of the module and of the internal machine (pictures 2 and 3).
 3. Fix WiFi module with tools.
 4. Fix the terminal cover with tools, and then WiFi module installation is finished.
- Please check below images.



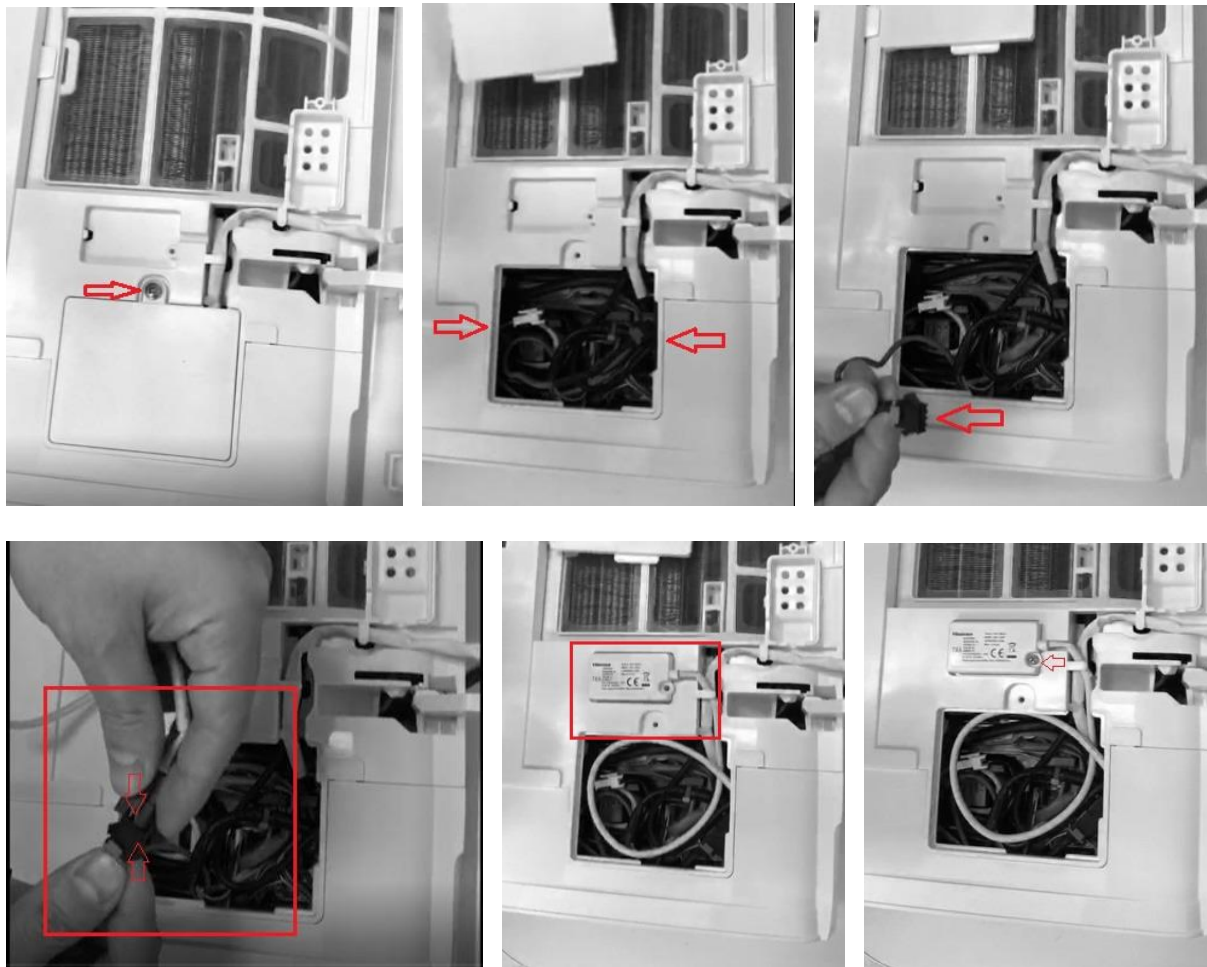
For more information about the ConnectLife application, please visit www.heinner.ro, WiFi manual section of HAC-HS12WIFI++/18WIFI++/24WIFI++ models.

Ghid de instalare – modul WiFi - ACC_HWIFI
Modele de aer conditionat Heinner compatibile:
HAC-HS09WH++ / HAC-HS09KIT++ / HAC-HS12WH++
HAC-HS12KIT++ / HAC-HS18WH++ / HAC-HS18KIT++
HAC-HS24WH++ / HAC-HS24KIT++

Va multumim pentru achizitie!

Cum se instaleaza modulul WiFi

1. Deschideti panoul aparatului de aer conditionat și folosiți o surubelnita pentru a demonta capacul terminalului (poza numarul 1).
 2. Conectati mufa modulului WiFi cu mufa unitatii interne (conform pozelor 2 si 3).
 3. Instalati modulul in locul special, iar apoi fixati-l cu un surub.
 4. Remontati capacul terminalului folosind o surubelnita. Instalarea modulului WiFi este finalizata.
- Va rugam sa verificati imaginile de mai jos:



Pentru mai multe informatii cu privire la utilizarea aplicatiei ConnectLife, va rugam sa accesati www.heinner.ro, sectiunea manual WiFi a modelelor: HAC-HS12WIFI++/18WIFI++/24WIFI++.